



12 South Center Street  
Bensenville, IL 60106

Office: 630.350.3404  
Fax: 630.350.3438  
[www.bensenville.il.us](http://www.bensenville.il.us)

## VILLAGE BOARD

### President

Frank DeSimone

### Board of Trustees

Rosa Carmona

Ann Franz

Agnieszka "Annie" Jaworska

McLane Lomax

Nicholas Panicola Jr.

Armando Perez

### Village Clerk

Nancy Quinn

### Village Manager

Evan K. Summers

January 24, 2019

Mr. Mike Stanojevic  
7710 Central Avenue  
River Forest, Illinois 60305

Re: January 22, 2019 FOIA Request

Dear Mr. Stanojevic:

I am pleased to help you with your January 22, 2019 Freedom of Information Act ("FOIA"). The Village of Bensenville received your request on January 22, 2019. You requested copies of the items indicated below:

*"We are completing a topographic survey at 501 E Red Oak Ave, Bensenville and need the information for two closest benchmarks to this property (survey control, with descriptions/locations)."*

After a search of Village files, the following information was found responsive to your request:

- 1) DuPage County Benchmark 0142. (1 pg.)
- 2) DuPage County Benchmark Q266. (1 pg.)
- 3) DuPage County Benchmark 0145. (1 pg.)
- 4) DuPage County Benchmark AD26003. (1 pg.)

These are all the records found responsive to your request.

Do not hesitate to contact me if you have any questions or concerns in connection with this response.

Very truly yours,

Corey Williamsen  
Freedom of Information Officer  
Village of Bensenville



# DuPage County, Illinois 2006 Geodetic Survey Monument



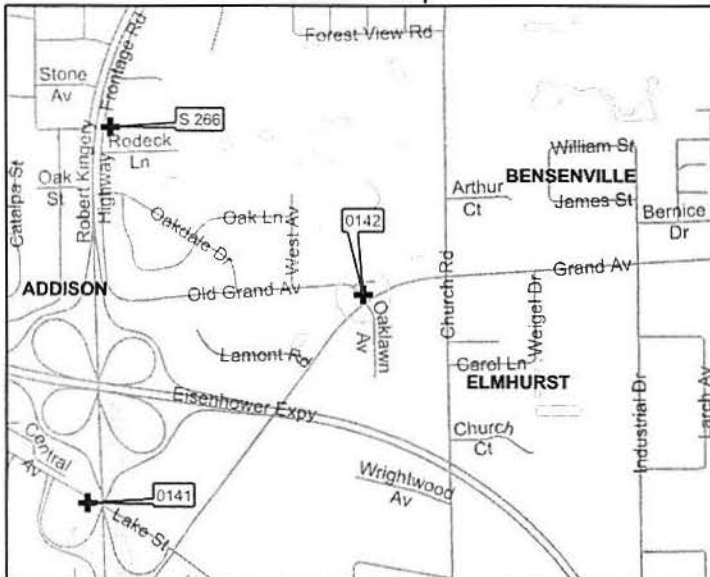
Benchmark:	0142	Station Elevation:	699.09 Ft
PID:	DK3306	Date Established:	Mar-2006
County:	DuPage	Date Last Checked:	
Township:	Addison	Vertical Datum:	NAVD 88
Northing:	1917392	Order of Accuracy:	2nd Order - Class 1
Easting:	1086722	NGS Horizontal Accuracy:	Not Applicable

**Caution:** Northing and easting information is given in NAD 83 Illinois State Plane East and are for location reference only. Actual northing and easting information may differ.

## Description:

Station is located at the north corner of the intersection of Grand Avenue with Old Grand Avenue to the north and Oak Lawn Avenue to the southeast. Station is 82.6 ft northwest of the centerline of Grand Avenue, 30.4 ft north of the centerline of Old Grand Avenue, and 36.4 ft southwest of the southwest corner of an electric box. Monument is a 3.5 inch brass disk on the southeast corner of a traffic signal base, 1.0 ft above road grade.

### Locator Map



### Aerial Map



### Benchmark Close Up



### Benchmark Locator Reference



Caution: Use of this information should be subject to strict professional surveying principles and verification checks. Monuments may have been disturbed since the data was verified by DuPage County, which may affect the validity and accuracy of the data herein provided. This data may from time-to-time be updated. Please refer to the DuPage County website for updates on benchmarks. To report the disturbance or destruction of a benchmark, please contact the DuPage County Information Technology Department, GIS Division.

Date of photography: Spring 2010, Spring 2011 where available.

DuPage County  
GIS Division  
421 N County Farm Road  
Wheaton, IL 60187  
Phone: 630-407-5000  
[www.dupageco.org/gis/](http://www.dupageco.org/gis/)

## Legend

- Geodetic Survey Monument
- Pavement Center Line





# DuPage County, Illinois 2006 Geodetic Survey Monument



Benchmark:	Q 266	Station Elevation:	658.61 Ft
PID:	ME1681	Date Established:	1969
County:	DuPage	Date Last Checked:	
Township:	Addison	Vertical Datum:	NAVD 88
Northing:	1917811	Order of Accuracy:	2nd Order - Class 1
Easting:	1096148	NGS Horizontal Accuracy:	GPS

**Caution:** Northing and easting information is given in NAD 83 Illinois State Plane East and are for location reference only. Actual northing and easting information may differ.

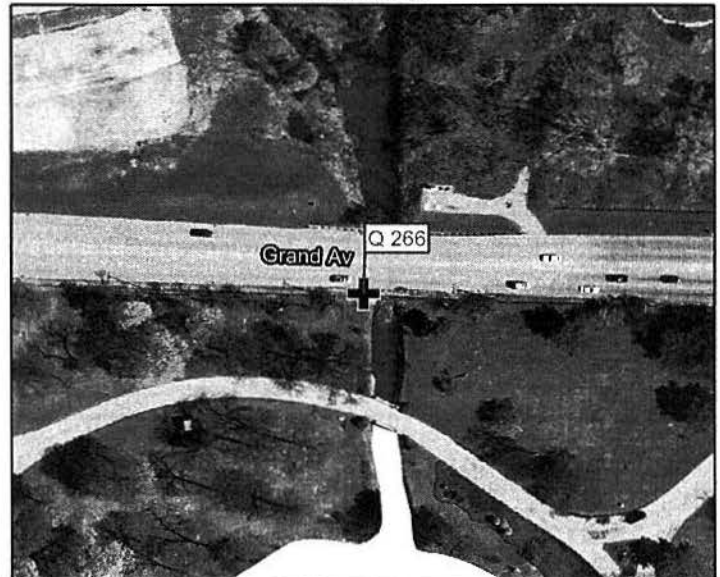
## Description:

Station is located along the south side of Grand Avenue on the southwest side of a box culvert. Station is 510.0 ft west of the centerline of County Line Road, 29.1 ft south of the centerline of Grand Avenue, and 5.8 ft southeast of a storm manhole on the south side of Grand Avenue. Monument is 1.5 ft above road surface on the west end of the 0.7 ft wide headwall, and is ferromagnetic.

### Locator Map



### Aerial Map



### Benchmark Close Up



### Benchmark Locator Reference



**Caution:** Use of this information should be subject to strict professional surveying principles and verification checks. Monuments may have been disturbed since the data was verified by DuPage County, which may affect the validity and accuracy of the data herein provided. This data may from time-to-time be updated. Please refer to the DuPage County website for updates on benchmarks. To report the disturbance or destruction of a benchmark, please contact the DuPage County Information Technology Department, GIS Division.

Date of photography: Spring 2010, Spring 2011 where available.

DuPage County  
GIS Division  
421 N County Farm Road  
Wheaton, IL 60187  
Phone: 630-407-5000  
[www.dupageco.org/gis/](http://www.dupageco.org/gis/)

## Legend

- Geodetic Survey Monument
- Pavement Center Line







# DuPage County, Illinois 2006 Geodetic Survey Monument



Benchmark:	0145	Station Elevation:	685.93 Ft
PID:	DK3300	Date Established:	Mar-2006
County:	DuPage	Date Last Checked:	
Township:	Addison	Vertical Datum:	NAVD 88
Northing:	1923067	Order of Accuracy:	2nd Order - Class 1
Easting:	1085829	NGS Horizontal Accuracy:	Not Applicable

**Caution:** Northing and easting information is given in NAD 83 Illinois State Plane East and are for location reference only. Actual northing and easting information may differ.

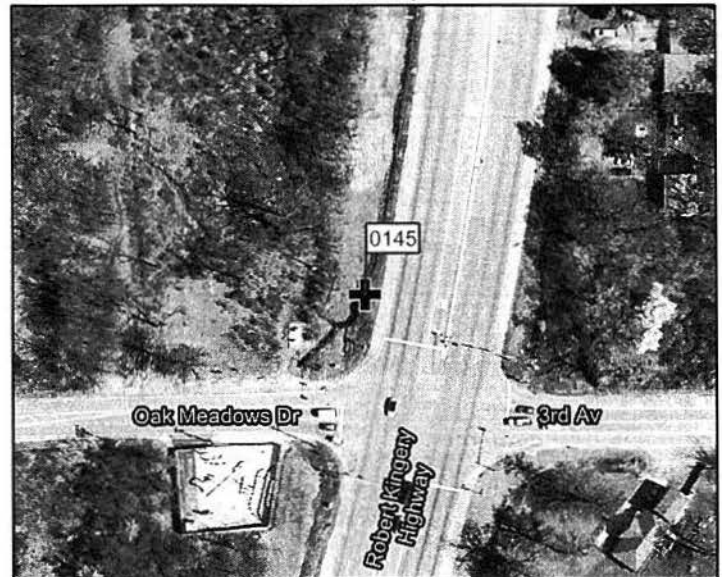
## Description:

Station is located at the northwest corner of the intersection of Illinois Highway 83 and 3rd Avenue to the east and Oak Meadows Drive to the west. Station is 46.4 ft north of a traffic signal post, 28.0 ft east of a power pole, and 13.0 ft west of the west edge of the paved shoulder of Highway 83. Monument is a 3.5 inch brass disk on the center of a headwall for drainage. Monument is 1.0 ft below road grade.

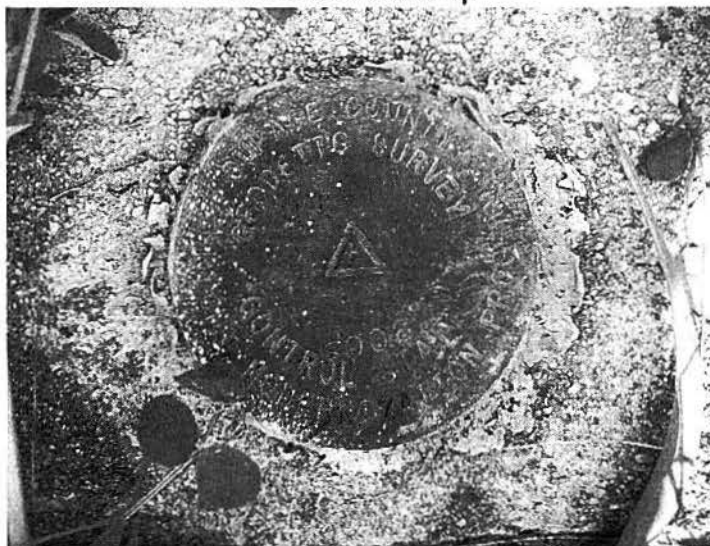
### Locator Map



### Aerial Map



### Benchmark Close Up



### Benchmark Locator Reference



**Caution:** Use of this information should be subject to strict professional surveying principles and verification checks. Monuments may have been disturbed since the data was verified by DuPage County, which may affect the validity and accuracy of the data herein provided. This data may from time-to-time be updated. Please refer to the DuPage County website for updates on benchmarks. To report the disturbance or destruction of a benchmark, please contact the DuPage County Information Technology Department, GIS Division.

Date of photography: Spring 2010, Spring 2011 where available.

DuPage County  
GIS Division  
421 N County Farm Road  
Wheaton, IL 60187  
Phone: 630-407-5000  
[www.dupageco.org/gis/](http://www.dupageco.org/gis/)

## Legend

- Geodetic Survey Monument
- Pavement Center Line





# DuPage County, Illinois 2006 Geodetic Survey Monument



Benchmark:	AD26003	Station Elevation:	693.77 Ft
PID:	DK3098	Date Established:	
County:	DuPage	Date Last Checked:	
Township:	Addison	Vertical Datum:	NAVD 88
Northing:	1917804	Order of Accuracy:	2nd Order - Class 1
Easting:	1091335	NGS Horizontal Accuracy:	

**Caution:** Northing and easting information is given in NAD 83 Illinois State Plane East and are for location reference only. Actual northing and easting information may differ.

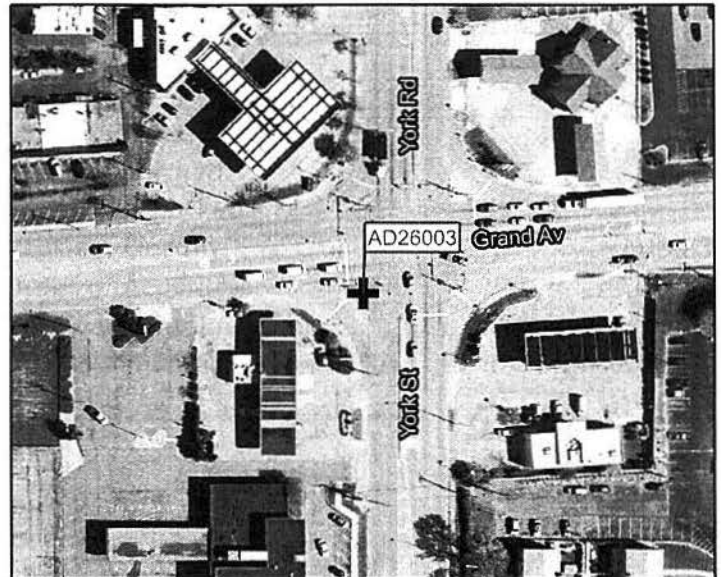
## Description:

Station is located in an island median at the southwest corner of the intersection of York Road and Grand Avenue. Station is 42.4 ft south of the centerline of Grand Avenue and 34.1 ft west of the centerline of York Road. Monument is 0.7 ft above road surface on the north side of a traffic signal base.

### Locator Map



### Aerial Map



### Benchmark Close Up



### Benchmark Locator Reference



Caution: Use of this information should be subject to strict professional surveying principles and verification checks. Monuments may have been disturbed since the data was verified by DuPage County, which may affect the validity and accuracy of the data herein provided. This data may from time-to-time be updated. Please refer to the DuPage County website for updates on benchmarks. To report the disturbance or destruction of a benchmark, please contact the DuPage County Information Technology Department, GIS Division.

Date of photography: Spring 2010, Spring 2011 where available.

DuPage County  
GIS Division  
421 N County Farm Road  
Wheaton, IL 60187  
Phone: 630-407-5000  
[www.dupageco.org/gis/](http://www.dupageco.org/gis/)

## Legend

- Geodetic Survey Monument
- Pavement Center Line

