

Re: Notification Required Under 220 ILCS 5/8-505.1

To Whom It May Concern:

ComEd intends to perform vegetation management activities on distribution circuits in your area within the next few months. The vegetation management activities are a key component of ComEd's maintenance program to ensure system electrical reliability, as vegetation contact with ComEd equipment is the leading cause of outages.

In accordance with applicable statutory requirements, ComEd is required to place on file with each municipality the area affected by the vegetation management activities. We have enclosed the required materials with this letter.

Please be aware that ComEd has notified any affected customers and property owners with (i) a statement of the vegetation management activities planned, (ii) the address of a website and a toll free telephone number at which a written disclosure of all dispute resolution opportunities and processes, rights, and remedies provided by the electric public utility may be obtained, (iii) a statement that the customer and the property owner may appeal the planned vegetation management activities through the electric public utility and the Illinois Commerce Commission, (iv) a toll-free telephone number through which communication may be had with a representative of the electric public utility regarding the vegetation management activities, and (v) the telephone number of the Consumer Affairs Officer of the Illinois Commerce Commission. The notice also stated that circuit maps and common addresses of the area to be affected by the vegetation management activities are on file with the office of the county board chairman of an affected county or his or her designee.

We recognize that our vegetation management activities sometimes create concern by your residents because trees near our electrical wires are significantly trimmed or sometimes require removal. Qualified line-clearance workers contracted by ComEd will be performing the tree pruning work. Supervisors and General Foremen will be in close contact with the crews, ensuring that the work is performed properly. Additionally, we are strong advocates of proactive efforts to ensure that only appropriate vegetation is planted near our facilities, and our easement and leases usually specify vegetation restrictions. Trees that grow greater than 20 feet, for example maple, elm and blue spruce, should never be planted under or near distribution power lines. At full height, these trees could contact lines and cause a power outage or create a safety issue. On the other hand, trees and bushes that grow to heights less than 20 feet, for example dogwoods or crabapples, can often be planted near distribution power lines. For more information about vegetation maintenance along power lines and ComEd's "Right Tree, Right Place" program, please visit: <https://www.comed.com/safety-community/safety/trees-power-lines>

Please direct any resident with questions or concerns to contact us at 1 (800) Edison-1

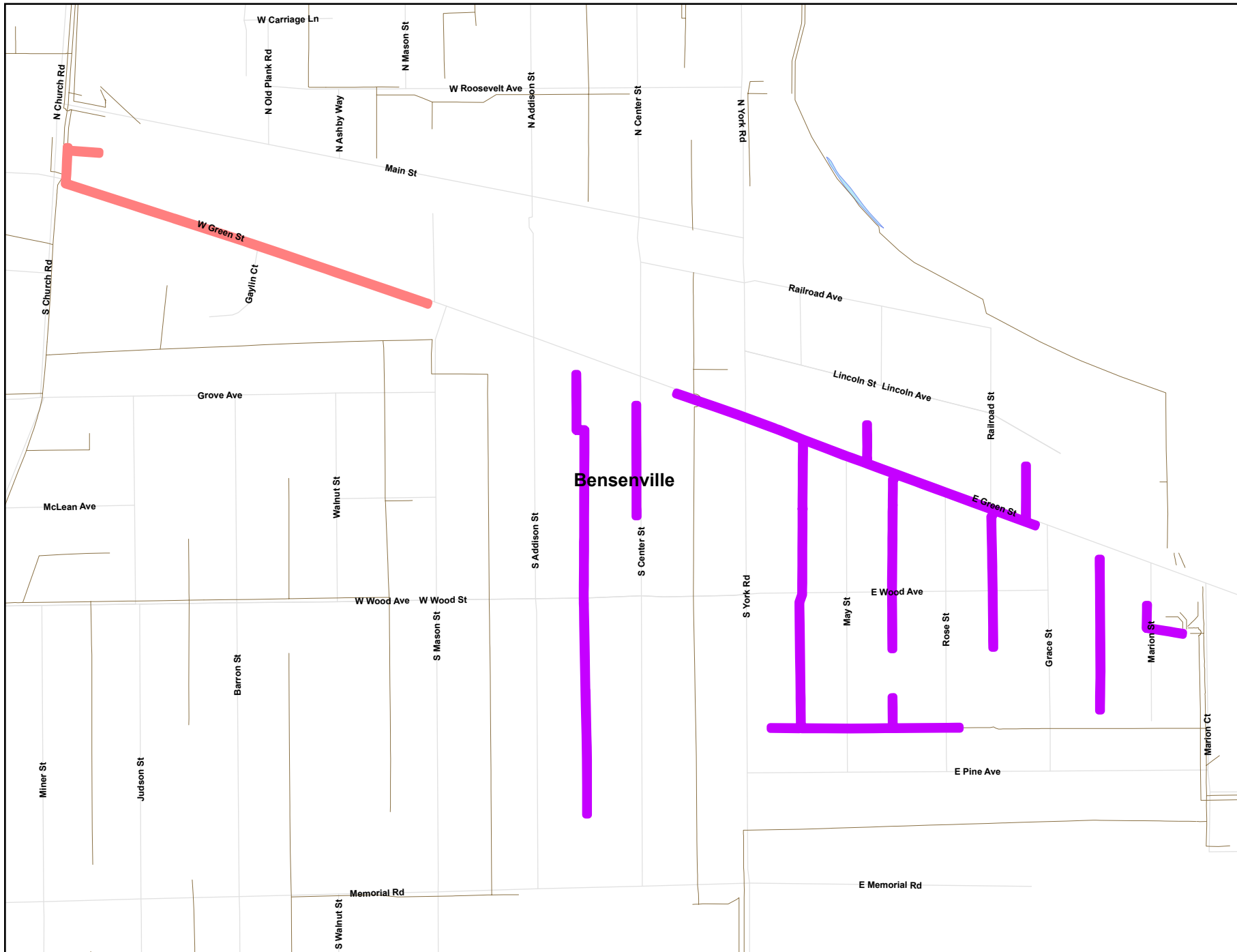
Sincerely,

Jason Brown, GISP | Senior Program Manager  
ComEd Vegetation Management  
D: (779)231-1703  
ISA Arborist # IL-9624AU



# Bensenville

## ComED Vegetation Management Scheduled Preventative Maintenance Trimming



### Work Area

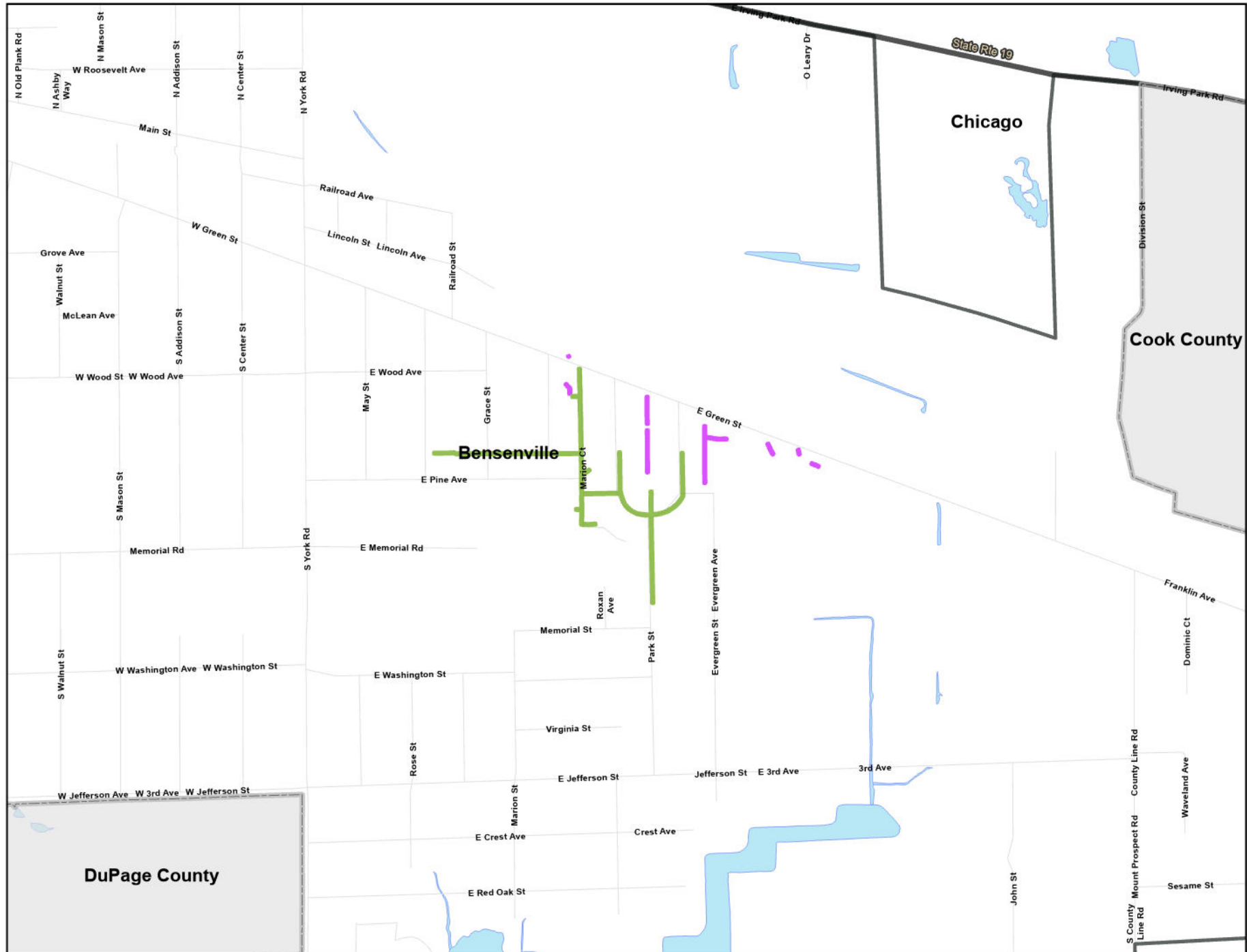
 **W465**

 **W481**



# Bensenville

## ComED Vegetation Management Scheduled Preventative Maintenance Trimming





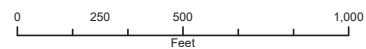
## 2025 Municipal Work Plans Bensenville Locations for E070

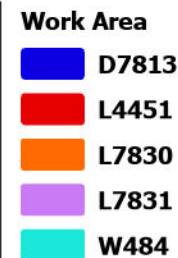


 **Work Areas**



**Note: This information is proprietary and confidential.**  
For more information contact your Local Municipal Office or 1-800-Edison-1





Note: This information is proprietary and confidential.  
For more information contact your Local Municipal Office or 1-800-Edison-1

