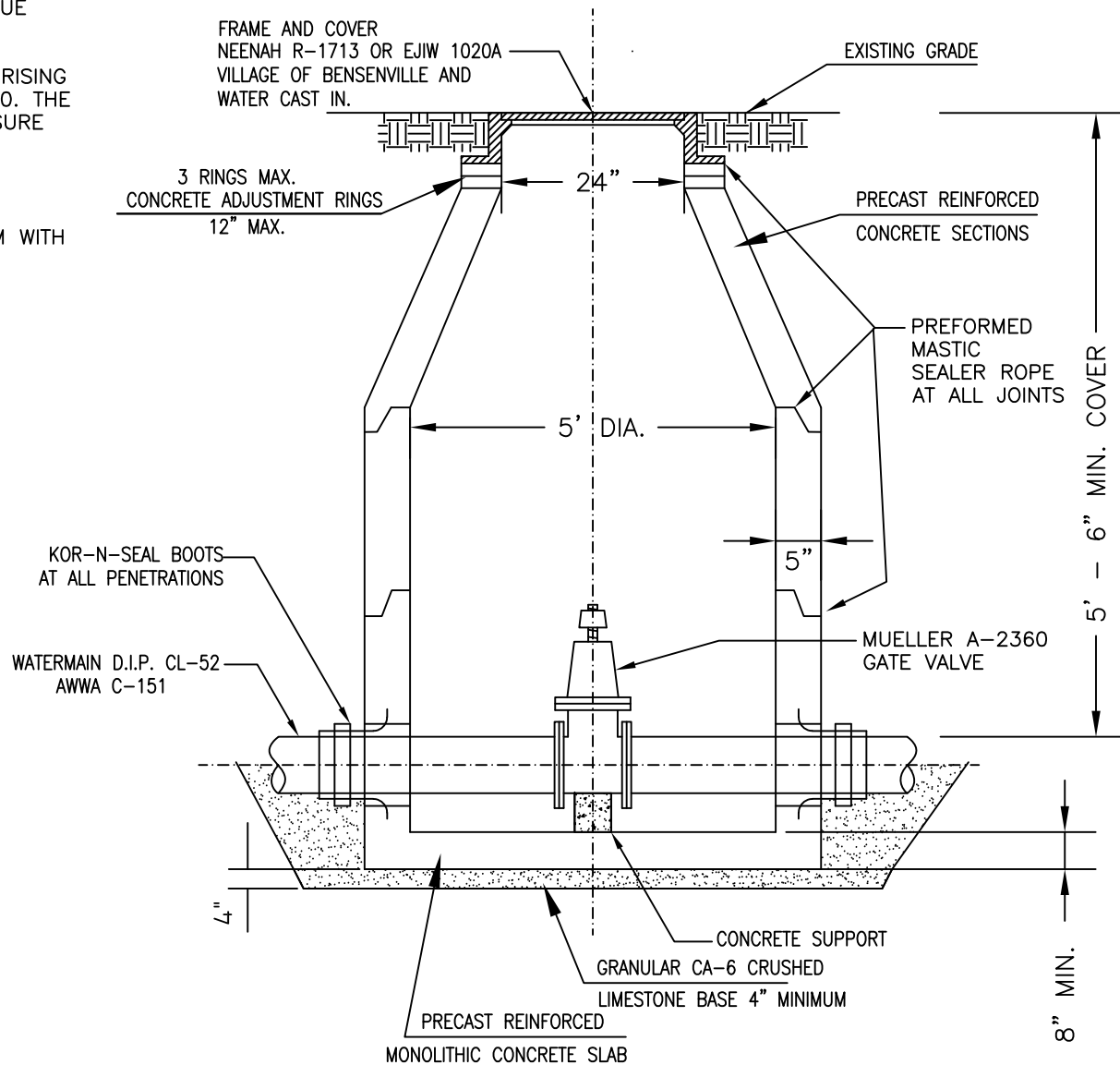


- NOTE:
1. THE VALVE SHALL HAVE MECHANICAL JOINTS.
 2. ALL FASTENER HARDWARE (i.e. NUTS, BOLTS, & WASHERS) ASSOCIATED WITH THIS VALVE SHALL BE STAINLESS STEEL.
 3. STEPS ARE NOT ALLOWED IN WATERMAIN VAULTS.
 4. THE VALVE SHALL BE RESTRAINED BY THRUST RESTRAINT WEDGE, RETAINER GLANDS MANUFACTURED WITH TORQUE LIMITING TWIST-OFF NUTS
 5. VALVE SHALL BE FULL BODIED EPOXY COATED, NON-RISING STEM, RESILIENT WEDGE GATE VALVE MUELLER A-2360. THE VALVE SHALL HAVE NAME, SIZE, AND WORKING PRESSURE CAST IN.
 6. VALVE VAULT SHALL BE WATER-TIGHT.
 7. IF PVC WATERMAIN IS PROPOSED, IT SHALL CONFORM WITH AWWA C-900 STANDARDS.



VILLAGE OF BENSENVILLE
12 S. CENTER STREET
BENSENVILLE, IL 60106
WWW.BENSENVILLE.IL.US

VALVE VAULT (PREFERRED) STANDARD

VILLAGE OF BENSENVILLE SPECIFICATIONS AND DETAILS	
FILE LOCATION	
G:\ENGINEERING\STANDARDS\ NEW STANDARDS\WATER	

REVISIONS	
1	12/8/2025