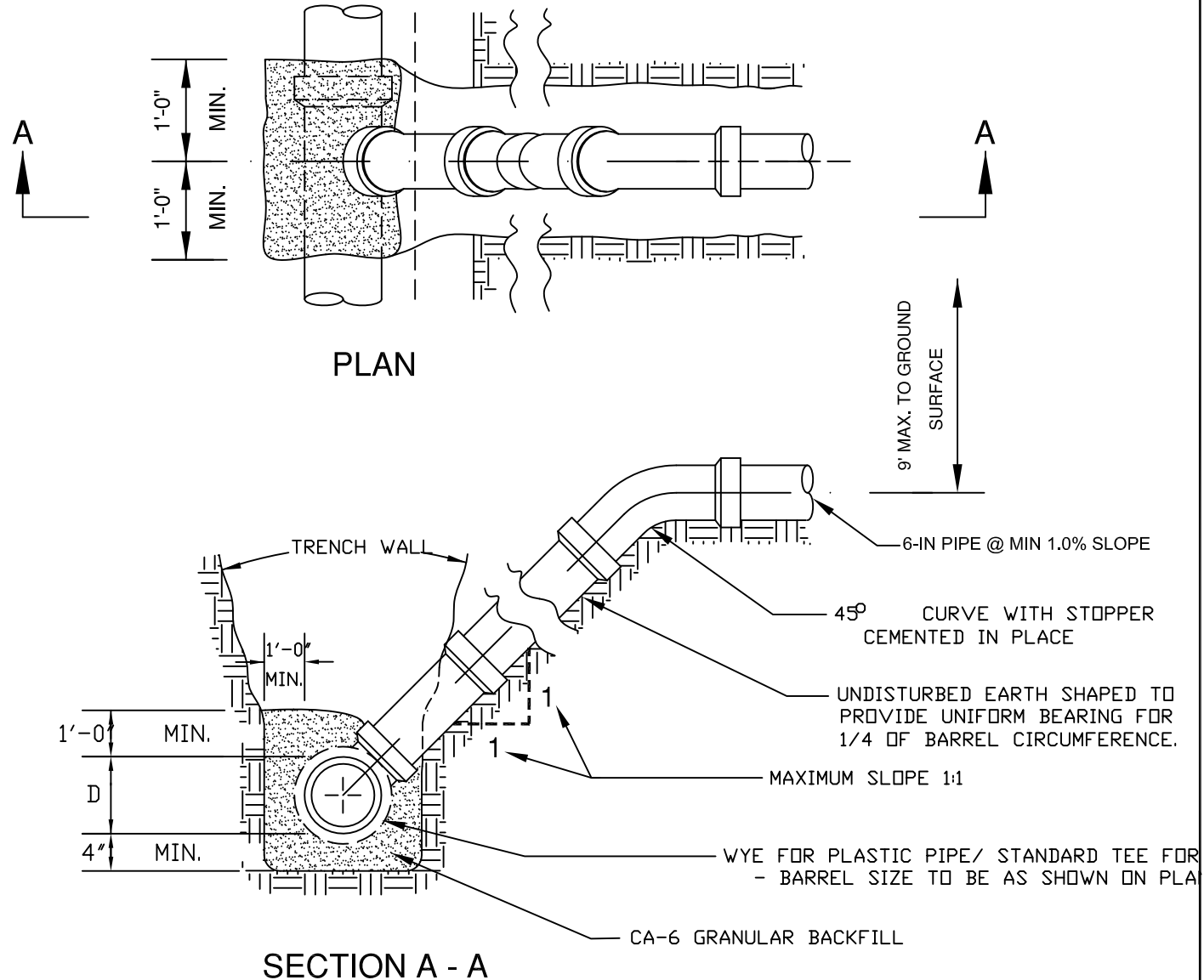


NOTES:

1. MINIMUM SANITARY SERVICE SIZE SHALL BE 6-INCH PVC SDR-26 @ MINIMUM 1.0% SLOPE.
2. ALL BACKFILL UNDER PAVED SURFACES AND WITHIN 2- FEET OF PAVED SURFACE SHALL BE CA-6, GR-8.
3. DISSIMILAR MATERIALS SHALL BE JOINED TOGETHER USING A NON-SHEAR MISSION COUPLING.
4. RISERS TO BE CONSTRUCTED IN-LIEU OF WYE CONNECTION WHERE SEWER DEPTH EXCEEDS 10'-0".
5. FOR A DEPTH OF 10 FEET OR GREATER, THE SERVICES SHALL BE CONSTRUCTED WITH DUCTILE IRON PIPE (D.I.P.).
6. WHERE A SEWER MAIN IS 15 FEET OR GREATER THE CONTRACTOR SHALL FURNISH A D.I.P. CONNECTION WITH ADAPTER FOR THE PLASTIC SEWER MAIN.
7. THE SANITARY SERVICE AT BUILDING WALL PENETRATION MUST BE CONSTRUCTED OF D.I.P.
8. A CLEAN OUT SHALL BE PROVIDED ON THE SERVICE LINE 5- FEET OUTSIDE OF THE BUILDING WALL.



VILLAGE OF BENSENVILLE
12 S. CENTER STREET
BENSENVILLE, IL 60106
WWW.BENSENVILLE.IL.US

SANITARY SERVICE RISER STANDARD

VILLAGE OF BENSENVILLE SPECIFICATIONS AND DETAILS	REVISIONS	
FILE LOCATION		
G:\ENGINEERING\ STANDARDS\ NEW STANDARDS\SANITARY		