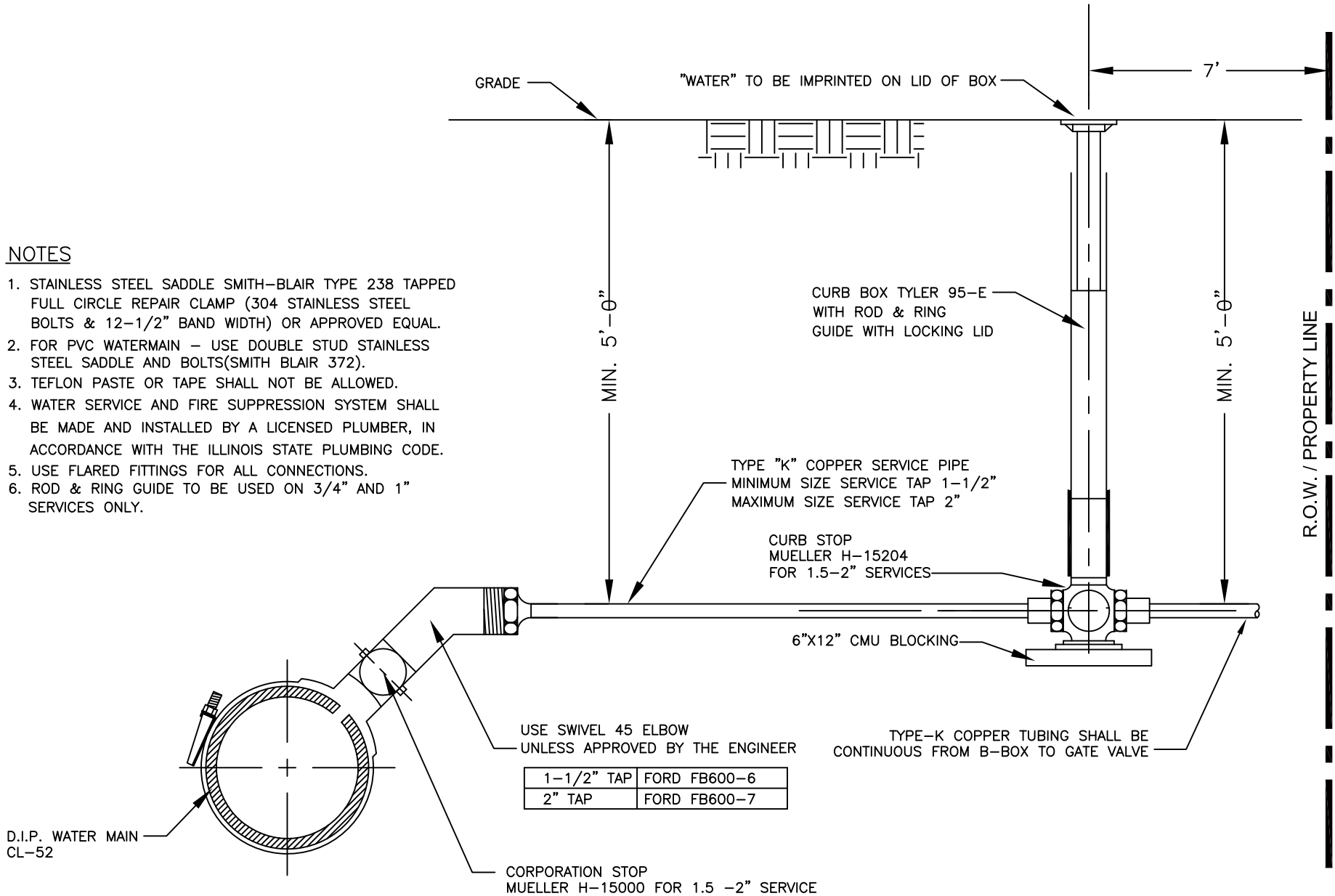


## NOTES

1. STAINLESS STEEL SADDLE SMITH-BLAIR TYPE 238 TAPPED FULL CIRCLE REPAIR CLAMP (304 STAINLESS STEEL BOLTS & 12-1/2" BAND WIDTH) OR APPROVED EQUAL.
2. FOR PVC WATERMAIN - USE DOUBLE STUD STAINLESS STEEL SADDLE AND BOLTS(SMITH BLAIR 372).
3. TEFLON PASTE OR TAPE SHALL NOT BE ALLOWED.
4. WATER SERVICE AND FIRE SUPPRESSION SYSTEM SHALL BE MADE AND INSTALLED BY A LICENSED PLUMBER, IN ACCORDANCE WITH THE ILLINOIS STATE PLUMBING CODE.
5. USE FLARED FITTINGS FOR ALL CONNECTIONS.
6. ROD & RING GUIDE TO BE USED ON 3/4" AND 1" SERVICES ONLY.



\*\*THIS METHOD IS ONLY TO BE USED WITH PRIOR APPROVAL FROM THE VILLAGE.\*\*



VILLAGE OF BENSENVILLE  
12 S. CENTER STREET  
BENSENVILLE, IL 60106  
WWW.BENSENVILLE.IL.US

## WATER SERVICE TAP (ALTERNATE) STANDARD

VILLAGE OF BENSENVILLE  
SPECIFICATIONS AND DETAILS

FILE LOCATION  
G:\ENGINEERING\STANDARDS\ NEW  
STANDARDS\

REVISIONS
